

Caretaker™



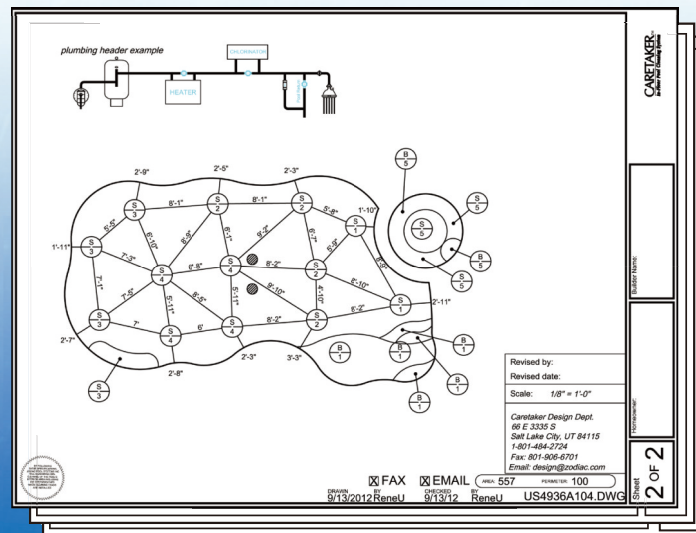
Hydraulic 5-Port Valve

Considered the workhorse of the industry, this valve has long provided pool owners with a dependable and efficient in-floor cleaning system. Ideal for most pools or spas, the 5-Port Valve maximizes power to give your pool a robust and thorough cleaning.



Caretaker Cleaning Head

Heads rotate 18 positions in a full 360° and start in the same position with each cycle, providing complete and reliable coverage. Additionally, each head comes with one of 6 different nozzle sizes determined by your pool's unique size and shape. Caretaker cleaning heads ensure a more thorough and effective cleaning than any other cleaning heads on the market.

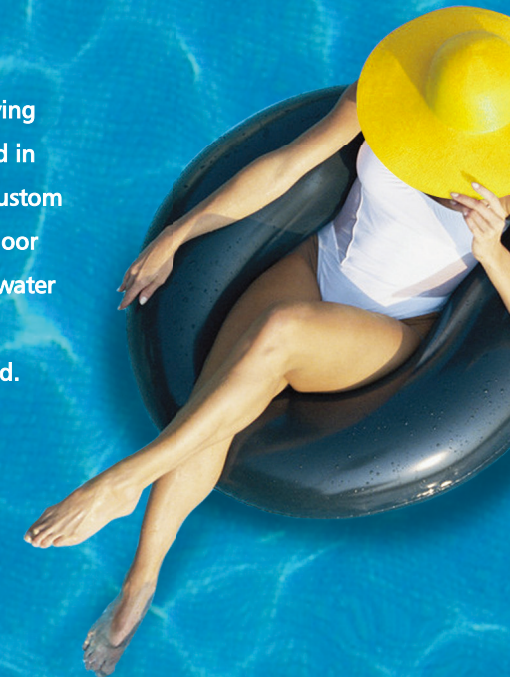


Custom Design Services

Caretaker's highly trained technicians will provide your pool builder with a customised Certified blueprint. The blueprint provides all information required to ensure that your Caretaker system cleans 99% of your pool, optimizes equipment performance, and provides complete circulation of water, heat and chemicals.

**Your pool should be a no-work zone.
We can keep it that way.**

Imagine a pool that efficiently cleans itself, circulates its own water, and saves money while giving you more time to enjoy it. With a Caretaker™ system, that's exactly what you'll have. Developed in 1972, Caretaker is the original in-floor pool and spa cleaning system. The Caretaker system is custom designed for the unique size and shape of your pool. It is installed to fit flush with your pool floor making it virtually invisible to the eye as it continuously works to keep your pool clean and its water properly circulated and chemically balanced. The Caretaker system replaces vacuum hoses and other stand-alone pool cleaners so your pool area is uncluttered and always ready to be enjoyed.



Reltech Australia

43-45 Kylta Road West Heidelberg
Ph: (03) 9459 3838 Fax: (03) 9459 4038
Web: www.reltech.com.au
Email: office@reltech.com.au

Caretaker™

RELTECH
Where the water flows best...

Caretaker™

Key Benefits

Saves Time

The powerful Caretaker system will automatically rid your pool of debris, ensure it is always clean, and minimize the time required for maintenance, leaving you more time to enjoy your pool.

Saves Energy and Money

While a Caretaker system ensures a cleaner, healthier pool, it also uses less energy, chemicals, and equipment runtime, significantly reducing your annual maintenance costs.

Optimizes Circulation

Ordinary pools circulate water from surface inlets causing most sections to receive little or no circulation. Poor circulation results in the loss or uneven distribution of valuable chemicals, heat, and water. It can also result in algae and bacteria growth. The Caretaker system prevents this by circulating clean water throughout your entire pool, optimizing the distribution of chemicals, and heat

Extends the Life of Pool Equipment

The Caretaker system saves wear and tear on your pool equipment, prolonging the life of your pump, filter, and heater.

Caretaker™ Technology

Water is directed by the Caretaker valve to cleaning heads located strategically throughout your pool. During each cleaning cycle, a group of two or more heads rises slightly from the floor to project a powerful stream of water that propels debris towards the main drain. This thorough process efficiently cleans 99% of your pool while circulating water, chemicals, and heat in a fraction of the time it would take other pool cleaning systems.

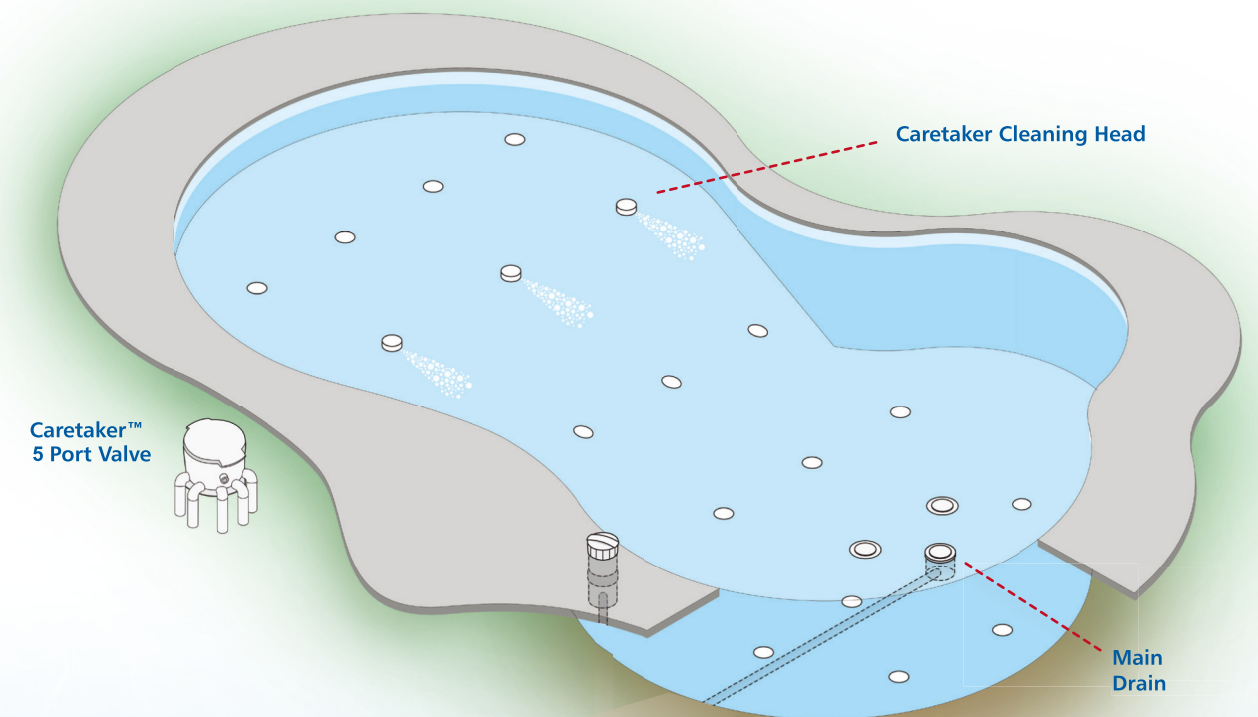
What Sets the Caretaker System Apart

Better Cleaning Coverage Heads rotate through 18 positions (more than any competitor) in a full 360° and start in the same position with each cycle, providing complete and reliable coverage.

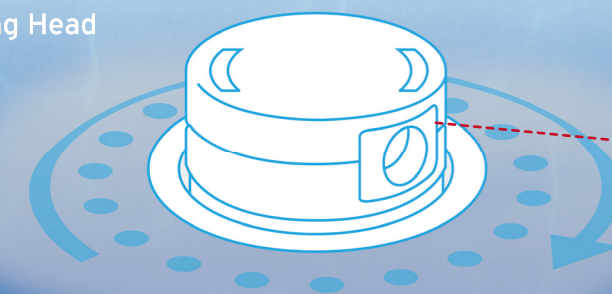
Energy Efficient Systematically pushes all debris to the main drain, not up the walls or back into corners.

Adjustability 6 nozzle sizes (more than any competitor) maximize the flow needed for select areas and allow customized flow for steps, benches, and swimouts.

Flexibility Unique collar design provides flexible positioning of heads for maximum cleaning.



Activated Cleaning Head



Rotates 18 Positions
in a Full 360°

Variable Nozzle Sizes
Mini
Step and Bench
Flow Adjust
Standard
Flow Plus
High Flow